

STEP-BY-STEP GUIDE TO EMBROIDERY SETUP

NEW EMBROIDERY CREATION*



Cintas Corporation • 5600 W 73rd Street • Chicago, IL 60638 U.S.A.
 U.S. Phone: 1.800.864.3676
 U.S. Fax: 1.800.864.3888
 International Phone: 1.800.922.9620
 International Fax: 1.800.889.0332

Account Number: _____
 Contact Name: _____
 Company Name: _____
 Email Address: _____
 Street Address: _____
 City: _____ State: _____ Zip: _____
 Work: _____ Home: _____

ARTWORK

Several types of artwork are acceptable:

- 1. Artwork files.** Acceptable PC and Mac formats include:
 TIFF BMP JPG EPS (Please select one.)
- 2. Camera-ready artwork.** A black-and-white image that has clean lines. A one-color piece of artwork can be accepted for very simple designs. A one-time art fee will be applied.
- 3. Digitized tapes.** You may already have an embroidery tape. These are subject to a one-time art fee. Acceptable embroidery tape formats include:
 DST FDR EXP (Please select one.)

SELECT THREAD COLOR

Specify thread by PMS color, or you may view thread colors at www.cintas.com. Click on "The Uniform Book", then click on "Embroidery".



EXAMPLE:

Color A: Snow White (1801) "The Uniform People"

Color B: Royal (1812) "C-I-N-T-A-S"

Color C: Red (1839) Red Bar (The Uniform People background)

Color 1: _____

Color 2: _____

Color 3: _____

Color 4: _____

Color 5: _____

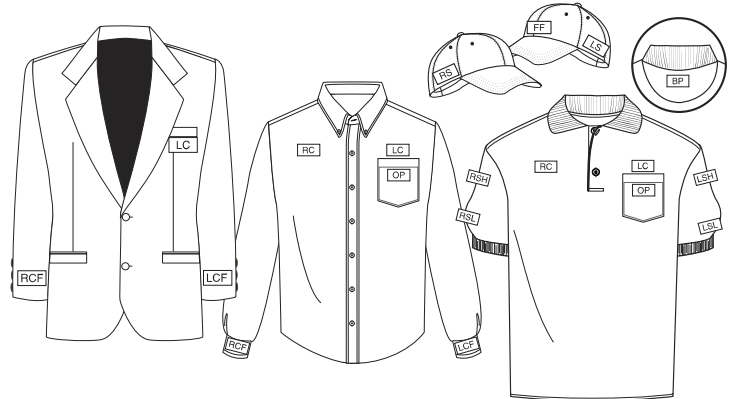
Color 6: _____

*Please complete a separate form for each logo.

**More embroidery placements may be available. Please call to inquire.

LOGO SIZE & PLACEMENT**

Placement is important because some garments restrict the size of the embroidery. See the chart below for restrictions. Certain fabrics are more conducive to embroidery than others. Please call to inquire.



- | | | |
|-----------------------|---------------------------|----------------------|
| RCF Right Cuff | RSL Right Sleeve | RS Right Side |
| LCF Left Cuff | LSL Left Sleeve | LS Left Side |
| LC Left Chest | RSH Right Shoulder | FF Full Front |
| RC Right Chest | LSH Left Shoulder | |
| OP On Pocket | BP Back Panel | |

Placement Code	Maximum Logo Size (HXW)
RCF, LCF, BP	1½" x 3"
OP	2" x 2½"
FF, RS, LS	2½" x 4"
RC, LC, RSH, LSH, RSL, LSL	3" x 3"

SENDING YOUR ORDER

Mail your completed General Order Form and Step-By-Step Guide along with your artwork to:
 Cintas Customer Service
 5600 W 73rd St
 Chicago, IL 60638 U.S.A.

For faster service, email all of the information required on the General Order Form and the Step-By-Step Guide along with your artwork to:
embroideryteam@cintas.com

THE NEXT STEPS

- Cintas will digitize your logo and create an embroidery tape from which an embroidered sew-out (sample) will be sent to you for approval with in 5 business days.
- Upon receiving your approval, your logo will be applied according to your specifications.



PERSONALIZATION

TO REQUEST PERSONALIZATION

- 1. Select Placement.** See page 4 for a full listing of placement options.
- 2. Select Thread Color.** For a listing of available thread colors, please visit www.cintas.com.
- 3. Select Font Style.** Available font options shown at right.
- 4. Select Font Size.** See below for available font size range.
- 5. Select Message.** Cintas will embroider up to three lines of text. Indicate your personalization characters, which includes spaces and punctuation. Please review the character chart below to determine how many characters fit on a line. Personalization charge is \$3.95.
- 6. Complete The Order Form.** Print name(s) or word(s) in the area specified on the order form. Be sure to also indicate your choice of thread color, font style and font size on this form as well.

FONT STYLE OPTIONS

Full Block Mixed	FBM
FULL BLOCK UPPER	FBU
Plain Block Mixed	PBM
PLAIN BLOCK UPPER	PBU
<i>Roman Block Mixed</i>	RBM
<i>ROMAN BLOCK UPPER</i>	RBU
<i>Easy Script Mixed</i>	ESM
EASY SCRIPT UPPER	ESU

SILK SCREENING AND PATCHES

Call Customer Service at: 800-UNIFORM (800-864-3676) or International 800-922-9620, for information on silk screening your company's logo on Cintas product or to learn more about customizing a patch from our collection.

MAXIMUM CHARACTERS PER LINE

	¼	5/16	3/8	7/16	½	9/16	5/8	11/16	¾
	Upr/Mxd	Upr/Mxd	Upr/Mxd	Upr/Mxd	Upr/Mxd	Upr/Mxd	Upr/Mxd	Upr/Mxd	Upr/Mxd
Full Block		16/17	11/15	9/13	8/11	7/10	6/8	6/8	5/7
Plain Block		16/19	13/16	11/13	9/12	8/11	7/9	6/8	6/7
Roman Block		16/17	11/15	9/13	8/11	7/10	6/8	6/8	5/7
Easy Script			21/25*	17/21**					

* Over 21 characters, width will be approximately 6"

** Over 17 characters, width will be approximately 6"

SIZE

CHARACTERS

5/16"

Plain Block Mixed 1

3/8"

Plain Block Mixe

7/16"

Plain Block M

1/2"

Plain Block

9/16"

Plain Block

5/8"

Plain Blo

11/16"

Plain BI

3/4"

Plain B